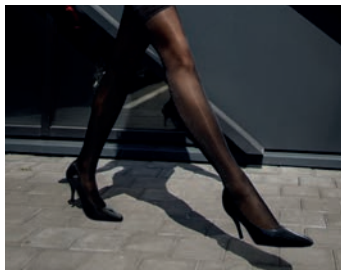


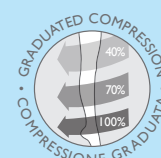
RELA X SAN[®]

GRADUATED COMPRESSION



BASIC line

Classical line of graduated compression stockings made using high quality double covered elastic fibers, to ensure comfort and durability. Reinforced and anatomic heel for a perfect fit. Four compression degrees available, from 8-11 mmHg (extra light) up to 22-27 mmHg (strong).



COMPRESSION	CODE	ARTICLE		SIZES					COLOURS			COMPOSITION
40 DEN 8-11 mmHg	430	AT	Tights	I	2	3	4XL	5XL	02 Black	36 Skin	21 Soleil	88% PA - 12% EA
70 DEN 12-17 mmHg	750	AD	Knee High Socks	I	2	3	4	5	02 Black	36 Skin	21 Soleil	83% PA - 17% EA
	700	AD	Knee High Socks without Preformed Heel		2	3	4	5	02 Black	36 Skin	21 Soleil	83% PA - 17% EA
	770	AGH	Stay-Up Stockings	I	2	3	4	5	02 Black	36 Skin	21 Soleil	83% PA - 17% EA
	780	AT	Tights	I	2	3	4	5	02 Black	36 Skin	21 Soleil	83% PA - 17% EA
	780X	AT	Tights		2XL	3XL	4XL	5XL	02 Black	36 Skin	21 Soleil	83% PA - 17% EA
	790	ATM	Maternity Tights with Adjustable elastic waist	I	2	3	4	5	02 Black	36 Skin	21 Soleil	83% PA - 17% EA
140 DEN 18-22 mmHg	850	AD	Knee High Socks	I	2	3	4	5	02 Black	36 Skin	21 Soleil	75% PA - 25% EA
	850A	AD	Knee High Socks Open toe NEW	I	2	3	4	5	02 Black	36 Skin		75% PA - 25% EA
	870	AGH	Stay-Up Stockings	I	2	3	4	5	02 Black	36 Skin	21 Soleil	75% PA - 25% EA
	870A	AGH	Stay-Up Stockings Open toe NEW	I	2	3	4	5	02 Black	36 Skin		75% PA - 25% EA
	880	AT	Tights	I	2	3	4	5	02 Black	36 Skin	21 Soleil	75% PA - 25% EA
	880X	AT	Tights		2XL	3XL	4XL	5XL	02 Black	36 Skin	21 Soleil	75% PA - 25% EA
	880A	AT	Tights Open toe NEW	I	2	3	4	5	02 Black	36 Skin		75% PA - 25% EA
	890	ATM	Maternity Tights with Adjustable elastic waist	I	2	3	4	5	02 Black	36 Skin	21 Soleil	75% PA - 25% EA
140 DEN PLUS 22-27 mmHg	850P	AD	Knee High Socks	I	2	3	4	5	02 Black	36 Skin	21 Soleil	75% PA - 25% EA
	870P	AGH	Stay-Up Stockings	I	2	3	4	5	02 Black	36 Skin	21 Soleil	75% PA - 25% EA
	880P	AT	Tights	I	2	3	4	5	02 Black	36 Skin	21 Soleil	75% PA - 25% EA
280 DEN 22-27 mmHg	950	AD	Knee High Socks	I	2	3	4	5	02 Black	36 Skin	21 Soleil	76% PA - 24% EA
	950A	AD	Knee High Socks Open toe	I	2	3	4	5	02 Black	36 Skin		76% PA - 24% EA
	960	AG	Stockings	I	2	3	4	5	02 Black	36 Skin	21 Soleil	76% PA - 24% EA
	960A	AG	Stockings Open toe	I	2	3	4	5	02 Black	36 Skin		76% PA - 24% EA
	970	AGH	DOT Stay-Up Stockings	I	2	3	4	5	02 Black	36 Skin	21 Soleil	76% PA - 24% EA
	970A	AGH	DOT Stay-Up Stockings Open toe	I	2	3	4	5	02 Black	36 Skin		76% PA - 24% EA
	980	AT	Tights	I	2	3	4	5	02 Black	36 Skin	21 Soleil	76% PA - 24% EA
	980X	AT	Tights		2XL	3XL	4XL	5XL	02 Black	36 Skin	21 Soleil	76% PA - 24% EA
	980A	AT	Tights Open toe	I	2	3	4	5	02 Black	36 Skin		76% PA - 24% EA

Tights
ATMaternity Tights
ATMStockings
AGStay-Up Stockings
AGHDOT Stay-Up
AGHKnee High Socks
AD**Available with the following compression ratings at the ankle**

40 DEN 8-11 mmHg Extra Light, designed for individuals suffering from leg fatigue.

70 DEN 12-17 mmHg Light, designed for individuals with mild circulatory problems, varicose veins and for pregnant women.

140 DEN 18-22 mmHg Medium, designed for individuals with chronic light circulatory problems, varicose veins, swelling and for pregnant women.

140 DEN PLUS/280 DEN 22-27 mmHg Strong, designed for serious circulatory problems, varicose veins, post surgery, oedema, phlebitis and for the prevention of thrombosis.

Recommendations

It is recommended to put on the garments in the morning, before getting out of bed. For proper use, please refer to the diagram on the bottom of the box. For proper effectiveness, use the size chart to select the correct size.

Contraindications

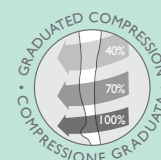
Individuals with severe arterial circulation disorders, recent and deep vein thrombosis, peripheral artery occlusion and dermatosis with secretions are advised to remove the garment before going to sleep.

SIZE CHART		I	2	3	4	5
Height	cm	154 - 162	158 - 166	162 - 174	166 - 182	174 - 190
Weight	Kg	43 - 53	48 - 63	58 - 73	63 - 83	68 - 93
Ankle girth	cm	18 - 20.5	20.5 - 23	23 - 25.5	25.5 - 28	28 - 30.5
			2XL	3XL	4XL	5XL
Weight	Kg		58 - 68	63 - 78	68 - 88	73 - 98



MICROFIBER line

Microfiber line of graduated compression stockings. Compression efficacy guaranteed by the use of high quality double covered elastic fibers creating an opaque effect thanks to the soft Microfiber yarns. Comfortable and durable. Anatomic heel for a perfect fit. Two compression degrees available, 12-17 mmHg (light) and 18-22 mmHg (medium).





COMPRESSION	CODE	ARTICLE		SIZES					COLOURS		COMPOSITION
70 DEN 12-17 mmHg	750M	AD	Knee High Socks	I	2	3	4	5	02 Black	21 Soleil	83% PA - 17% EA
	770M	AGH	Stay-Up Stockings	I	2	3	4	5	02 Black	21 Soleil	83% PA - 17% EA
	780M	AT	Tights	I	2	3	4	5	02 Black	21 Soleil	83% PA - 17% EA
	790M	ATM	Maternity Tights with Adjustable elastic waist	I	2	3	4	5	02 Black	21 Soleil	83% PA - 17% EA
	780ML	ATL	Leggings NEW	I	2	3	4	5	02 Black	14 Grey	83% PA - 17% EA
140 DEN 18-22 mmHg	850M	AD	Knee High Socks	I	2	3	4	5	02 Black	21 Soleil	79% PA - 21% EA
	870M	AGH	Stay-Up Stockings	I	2	3	4	5	02 Black	21 Soleil	79% PA - 21% EA
	880M	AT	Tights	I	2	3	4	5	02 Black	21 Soleil 14 Grey	79% PA - 21% EA
	890M	ATM	Maternity Tights with Adjustable elastic waist	I	2	3	4	5	02 Black	21 Soleil	79% PA - 21% EA
	880ML	ATL	Leggings NEW	I	2	3	4	5	02 Black	14 Grey	83% PA - 17% EA

Tights
ATMaternity Tights
ATMLeggings
ATLStay-Up Stockings
AGHKnee High Socks
AD**Available with the following compression ratings at the ankle**

70 DEN 12-17 mmHg Light, designed for individuals with mild circulatory problems, varicose veins and for pregnant women.

140 DEN 18-22 mmHg Medium, designed for individuals with chronic light circulatory problems, varicose veins, swelling and for pregnant women.

Recommendations

It is recommended to put on the garments in the morning, before getting out of bed. For proper use, please refer to the diagram on the bottom of the box. For proper effectiveness, use the size chart to select the correct size.

Contraindications

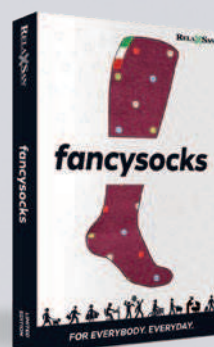
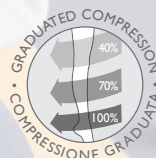
Individuals with severe arterial circulation disorders, recent and deep vein thrombosis, peripheral artery occlusion and dermatosis with secretions are advised to remove the garment before going to sleep.

SIZE CHART		1	2	3	4	5
Height	cm	154 - 162	158 - 166	162 - 174	166 - 182	174 - 190
Weight	Kg	43 - 53	48 - 63	58 - 73	63 - 83	68 - 93
Ankle girth	cm	18 - 20.5	20.5 - 23	23 - 25.5	25.5 - 28	28 - 30.5



fancysocks

Knee High Socks / Pattern Cotton socks for Men and Women with graduated compression 15-21 mmHg at the ankle. These Relaxsan graduated compression Cotton elastic socks are soft, resistant and very comfortable. The pattern in different colours make Relaxsan Fancy socks true fashion accessories.



COMPRESSION	CODE	ARTICLE	SIZES	COLOURS	COMPOSITION
15-21 mmHg	810-01	AD Knee High Socks	1-S 2-M 3-L 4-XL	Avio Grafite Rubino	60% CO - 25% PA - 15% EA

SIZE CHART	1-S	2-M	3-L	4-XL
Shoe Size	36 - 39	40 - 42	43 - 45	46 - 48
Foot Length	cm 22.5 - 25.5	25.4 - 27.2	27.3 - 29.3	29.4 - 31.3
Ankle Girth	cm 17 - 20	21 - 23	24 - 26	27 - 30



NEW

Essential+

In everything You Do

Reinvent the Compression Socks

Essential+ is a revolutionary, high technological content stocking. A **double fabric layer** provides adds elasticity for **improved fit** and enhanced comfort for everyday wear.

The inner **cotton** and **cashmere** lining guarantees a remarkably soft sensation on skin, whereas the outer microfibre layer provides a pleasant sensation of elegance and resistance to the touch.

Product comfort is immediately perceptible during wear: thanks to the **absence of the stretch trim edge** around the knee, **no marks are left on skin** and the fit encourages better circulation.



MEDICAL
DEVICE



DOUBLE
LAYER



NO LACE
EFFECT



SOFT
TOUCH

COMPRESSION	CODE	ARTICLE		SIZES					COLOURS	COMPOSITION
23-32 mmHg - K2	922	AD	Knee High Socks	2S	3L	4XL	5XL	6XXL	Black	43% PA - 36% CO - 13% EA - 4% WS - 4% ME

SIZE CHART		2 - S	3 - M	4 - L	5 - XL	6 - XXL
SHOE SIZE		36 - 39	39 - 41	41 - 43	43 - 45	45 - 48
FOOT LENGTH	cm	23 - 25	25 - 26,4	26,4 - 27,7	27,7 - 29	29 - 31
ANKLE GIRTH	cm	18 - 22	20 - 24	22 - 26	24 - 28	26 - 30

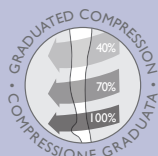


CE Dispositivo Medico
Medical Device
MADE IN ITALY

OEKO-TEX®
CONFIDENCE IN TEXTILES
STANDARD 100
14CX00025 CENTROCOT
Tested for harmful substances.
www.oeko-tex.com/standard100

COTTON SOCKS

Unisex Cotton knee socks with graduated compression. Fine Cotton at skin contact, soft and comfortable elastic knee hem. Anatomical and reinforced heel and toe for maximum comfort, proper fit and long durability. Two compression degrees available, 18-22 mmHg (medium) and 22-27 mmHg (strong).



COMPRESSION	18-22 mmHg						22-27 mmHg					
CODE	820						920					
ARTICLE	Knee High Socks						Knee High Socks					
COMPOSITION	57% CO - 32% PA - 11% EA						53% CO - 31% PA - 16% EA					
SIZES	1	2	3	4	5	6	1	2	3	4	5	6
COLOURS	01 White		02 Black		01 White		02 Black					
	03 Blue		05 Smoke		03 Blue		05 Smoke					
	15 Grey		36 Skin		15 Grey							

SIZE CHART		1 - XS	2 - S	3 - M	4 - L	5 - XL	6 - XXL
Shoe size		35 - 37	37 - 39	39 - 41	41 - 43	43 - 45	45 - 47
Foot size	cm	21.7 - 23.7	23 - 25	24.4 - 26.4	25.7 - 27.7	27 - 29	28.4 - 30.4
Ankle girth	cm	18 - 20	20 - 22	22 - 24	24 - 26	26 - 28	28 - 30



COTTON SOCKS EXTRASOFT

Unisex Milk fiber sock with graduated compression. Viscose and Milk fiber make the skin soft and silky and maintains the foot stays fresh and dry. Reinforced and anatomical heel and toe. Product is extremely soft and comfortable. Available in compression 18-22 mmHg (medium).



COMPRESSION	18-22 mmHg					
CODE	820M					
ARTICLE	Knee High Socks					
COMPOSITION	53% VI - 23% PR - 14% PA - 10% EA					
SIZES	1	2	3	4	5	6
COLOURS	01 White			02 Black		
	03 Blue			05 Smoke		

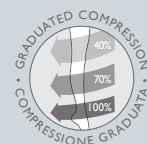
SIZE CHART	1 - XS	2 - S	3 - M	4 - L	5 - XL	6 - XXL
Shoe size	35 - 37	37 - 39	39 - 41	41 - 43	43 - 45	45 - 47
Foot size	cm 21.7 - 23.7	23 - 25	24.4 - 26.4	25.7 - 27.7	27 - 29	28.4 - 30.4
Ankle girth	cm 18 - 20	20 - 22	22 - 24	24 - 26	26 - 28	28 - 30





COTTON SOCKS

Cotton and Silver fiber Mens knee sock with graduated compression. Silver fiber at skin contact provides an antibacterial function, and soft and comfortable knee elastic hem. Anatomical and reinforced heel and toe for maximum comfort, proper fit and long durability. Two compression degrees available, 18-22 mmHg (medium) and 22-27 mmHg (strong).



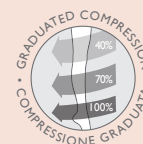
COMPRESSION	18-22 mmHg	22-27 mmHg
CODE	830	930
ARTICLE	Knee High Socks	Knee High Socks
COMPOSITION	60% CO - 22% PA - 10% EA - 8% ME	60% CO - 20% PA - 15% EA - 5% ME
SIZES	2 3 4 5 6	2 3 4 5 6
COLOURS	02 Black	02 Black

SIZE CHART	2 - S	3 - M	4 - L	5 - XL	6 - XXL
Shoe size	37 - 39	39 - 41	41 - 43	43 - 45	45 - 47
Foot size	cm 23 - 25	24.4 - 26.4	25.7 - 27.7	27 - 29	28.4 - 30.4
Ankle girth	cm 20 - 22	22 - 24	24 - 26	26 - 28	28 - 30



COTTON SOCKS

Mens knee sock with graduated compression and massaging sole. Fine cotton at skin contact. Comfortable and soft elastic knee hem. Massaging sole that helps plantars microcirculation and foot perspiration. Elegant and exclusive lateral design. Reinforced and anatomical heel and toe. Available in compression 18-22 mmHg (medium).



COMPRESSION	18-22 mmHg				
CODE	820B				
ARTICLE	Knee High Socks				
COMPOSITION	70% CO - 13% EA - 12% PA - 5% PP				
SIZES	2	3	4	5	6
COLOURS	02 Black	03 Blue	05 Smoke	12 Brown	

SIZE CHART		2 - S	3 - M	4 - L	5 - XL	6 - XXL
Shoe size		37 - 39	39 - 41	41 - 43	43 - 45	45 - 47
Foot size	cm	23 - 25	24.4 - 26.4	25.7 - 27.7	27 - 29	28.4 - 30.4
Ankle girth	cm	20 - 22	22 - 24	24 - 26	26 - 28	28 - 30



MADE IN ITALY





Calze G.T. s.r.l was founded in 1984, a long tradition in the production of Stockings and Tights. The experience accumulated over the years and the professionalism and textile expertise have given life to the RelaxSan brand, a complete line of Stockings, Tights, Knee Highs with graduated compression for the prevention and treatment of problems relating to the circulation of the legs.

ITALIAN QUALITY

RelaxSan products are 100% Made in Italy, products completely designed, manufactured and packed in Italy, to guarantee high quality standards!

MADE IN ITALY

www.relaxsan.it

A brand of



Calze G.T. S.r.l

Via Walter Tobagi 17/19/21
46040 Casaloldo (MN) Italy
www.gtcalze.com